



# LoadConnect Software



Record live loadcell data from worksites using LoadConnect, a comprehensive cloud-based online dashboard that connects to either the WiFi version LCBS-W base station or the 3G/4G Network version LCBS-N base station transmitting data via a cellular micro sim card.

A solution to monitor loads and line tensions from anywhere in the world and at multiple locations. Stay connected, improve safety and efficiency by permanently and wirelessly transmitting live data to a comprehensive data suite.

The cloud dashboard data will enhance productivity and efficiency at facilities, factories, shipbuilding yards or construction sites where detailed logging and reporting of load cell (crane) productivity, safety alerts, and throughput is required.

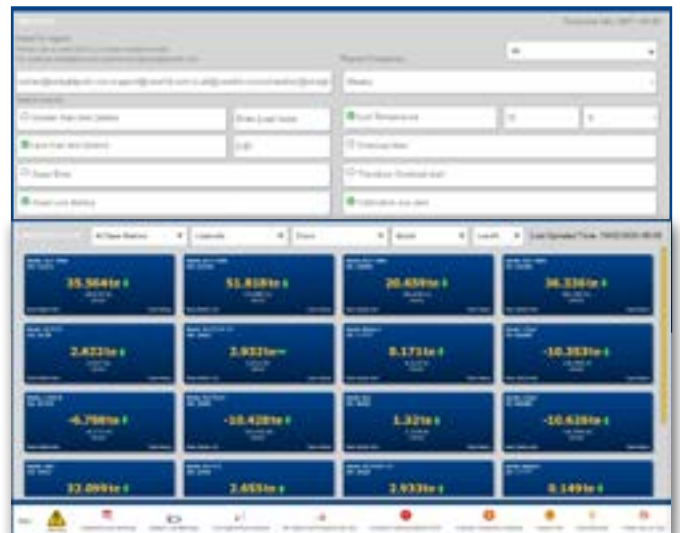
## How it works

Data is sent from Crosby SP wireless load cells by its connected LoadConnect base station and then transmitted to the LoadConnect online dashboard in real time.

Simply subscribe and log in online to view the dashboard which has been specifically designed for industry professionals to view and access load data with a large array of alerts and alarms.

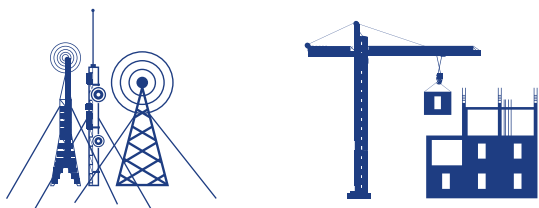
View asset location and share reports with a full analysis of productivity and utilisation, all data that will help improve efficiencies.

Free subscription for the first year.



## FEATURES

- Dashboard overview
- Live load data
- Error and condition reporting
- Productivity and utilisation graphs
- Regular email reporting
- Connect to BOLT to monitor tension on cables
- Connect to SP loadcells to monitor loads



## BENEFITS

- Cloud-based solution to monitor loads from anywhere in the world
- Improve worksite safety with real time load data
- Reduce site visits to remote sites
- Improve productivity by data analysis
- Faster reaction and collaboration
- Protect assets such as cranes and product
- Monitor lifting projects from across the globe



Real-time viewing of load cells (within 1 minute) by location or load cell.

- **Productivity** - the amount of 'lifts' per day
- **Utilisation** - how many loadcells are active or on standby
- **Asset location** - view precise coordinates and map of assets
- **Reporting** - features include datalogging at customisable time intervals, sent via email to the recipient in .csv format
- **Alerts** - Dashboard alerts for each load cell, these can also be added to the customisable reports
  - Over and under-load alarm limits triggered
  - Loadcell error
  - Loadcell low battery
  - Loadcell permanent overload alert (over 110% of loadcell WLL)
  - Loadcell overload alert (over 101% of loadcell WLL)
  - Loadcell calibration due alert
  - Loadcell RF error alert
  - Loadcell cloud data transfer error
  - Base station casing opened
  - Base station power input done alert
  - Base station high temperature / low temperature
  - All events cleared alert



Part number	LCBS-N	LCBS-W
Crosby Part	2789574	2789596
Required Power Supply	9 to 28 V DC	9 to 28 V DC
Radio frequency	2.4 GHz (License Free)	2.4 GHz (License Free)
Maximum number of Loadcells	16 wireless (or 15 wireless & 1 cabled)	16 wireless (or 15 wireless & 1 cabled)
Range	Up to 500 m / 1640 ft	Up to 500 m / 1640 ft
Operating temperature	-10 to +50 °C / 14 to 122°F	-10 to +50 °C / 14 to 122°F
Backup battery life	8 hours	8 hours
Input option	1x 4-20mA (2 wire) OR 1x mV/V	1x 4-20mA (2 wire) OR 1x mV/V
Weight	2.75 kg / 6lbs	2.75 kg / 6lbs
Network supported	3G/4G	2.4GHz WiFi
Frequency band	LTE-TDD B34/B38/B39/B40/B41 LTE-FDD B1/B2/B3/B4/B5/B7/B8/B12/B13/ B18/B19/B20/B25/B26/B28/B66 UMTS/HSPA+ B1/B2/B4/B5/B6/B8/B19	NA
SIM type	Micro SIM (not included)	NA
Alert functionality	via SMS (up to 3 pre-defined numbers)	Subscription to online dashboard only <b>(No SMS Alerts)</b>
IP Rating	IP67/NEMA6	IP67/NEMA6
Dimension	560 x 260 x 90 mm / 22" x 10.2" x 3.5" - antennas included	560 x 260 x 90 mm / 22" x 10.2" x 3.5" - antennas included
Data option to be enabled on the SIM card used for full functionality User configuration is required via free software supplied		