

straightpoint

USER GUIDE

WCOGS
Wireless Centre of Gravity
Software Version 2.21



Crosby®

SP®

SU3559 Issue 04 Oct 2016



This user guide has been compiled to cover the latest product description and specifications.

Straightpoint reserves the right to make changes to the contents herein without notice and shall not be responsible for any damages (including consequential) caused by reliance on the information provided, including but not limited to technical or editorial errors or omissions.

The only warranties for Straightpoint products and services are set forth in the warranty statements accompanying such products and services. Nothing herein should be construed as constituting an additional warranty.

© Copyright 2016. The copyright of this User Guide is the property of Straightpoint Limited.

To make it easier in the event you need technical support customer service, please complete the following information:

Software Version:	
Media:	USB memory stick <input type="checkbox"/> Download <input type="checkbox"/>
Date of Purchase:	

Trademarks

Windows® XP, Windows® Vista, Windows® 7, Windows® 8, Windows® 9 and Windows® 10 are registered trademarks or trademarks of Microsoft Corporation in the United States and other countries.

Intel® Core™ i3 processor is a trademark of Intel Corporation or its subsidiaries in the United States and/or other countries.

Marks & Symbols

The following symbols may be used within this user guide.



Indicates a note or where attention is required



IMPORTANT

Indicates an important step, instruction or information necessary for the proper functioning of the software or loadcell monitoring.



CAUTION

Indicates a potentially hazardous situation that if not followed or avoided may result in personal injury or damage to property.

Straightpoint (UK) Ltd

Unit 9, Dakota Park, Downley Road
Havant, Hampshire, PO9 2NJ UK
Tel: 02392 484491
Fax: 02392 472211
straightpoint.com · sales@straightpoint.com

The Crosby Group

2801 Dawson Rd,
Tulsa, OK 74110, USA
Tel: 918 834-4611
thecrosbygroup.com
sales@straightpoint.com



Contents

1. Introduction	4
Intended Use	4
Additional Required Items & Documents	4
Computer System Requirements	4
2. System Overview	5
General	5
WCOGS Software	5
3. Installation & Set Up	6
Important Note	6
Installation	7
Set Up	8
Transceiver Alignment	11
4. Using the System	12
Preparing for Test	12
Realtime Weight & Centre of Gravity	13
Graphical View	15
Weighing Report	16
Test Completion	17

1. Introduction

Intended Use

The Straightpoint Wireless Centre of Gravity Software (WCOGS) is intended to be used by professionals in the heavy lifting and weighing industry for the determination the centre of gravity of large and heavy structures using multi-arrays of compression loadcells.

The software and required drivers is available as a download, or provided on a USB memory stick.

The software licence is free.

Additional Required Items & Documents

- Straightpoint SW-USBBSE Transceiver;
- Straightpoint WNI Series Compression Loadcells (minimum 3; maximum 36);
- Loadcell User Guide SU3442;
- Desktop computer/laptop/tablet/other Windows® device.

Computer System Requirements

- Intel® Core™ i3 processor with minimum 2 GB RAM;
- Windows® XP, Windows® Vista, Windows® 7, Windows® 8, Windows® 9 or Windows® 10 (must have English language option selected);
- Spare USB port (not hub).



Caution

Ensure Straightpoint wireless compression loadcells are handled and used in accordance with the safety instructions within the Loadcell User Guide SU3342. This is supplied with the loadcell.

Other equipment used in conjunction with Straightpoint loadcells, such as jacks, hydraulic cylinders, chains, strops, lifting frames, and other material handling equipment, must be inspected, checked, handled and used in accordance the appropriate manufacturer/supplier information and/or with all pertinent regulatory requirements and Industry Standards/Codes of Practice.

2. System Overview

General

When moving large industrial items such as absorbers, generators, turbines, reactors, boilers, towers, locomotives, boats, military equipment or offshore industry parts such as oil rigs and production platforms, heavy lift companies very often need to be able to quickly report the weight and centre of gravity of such loads.

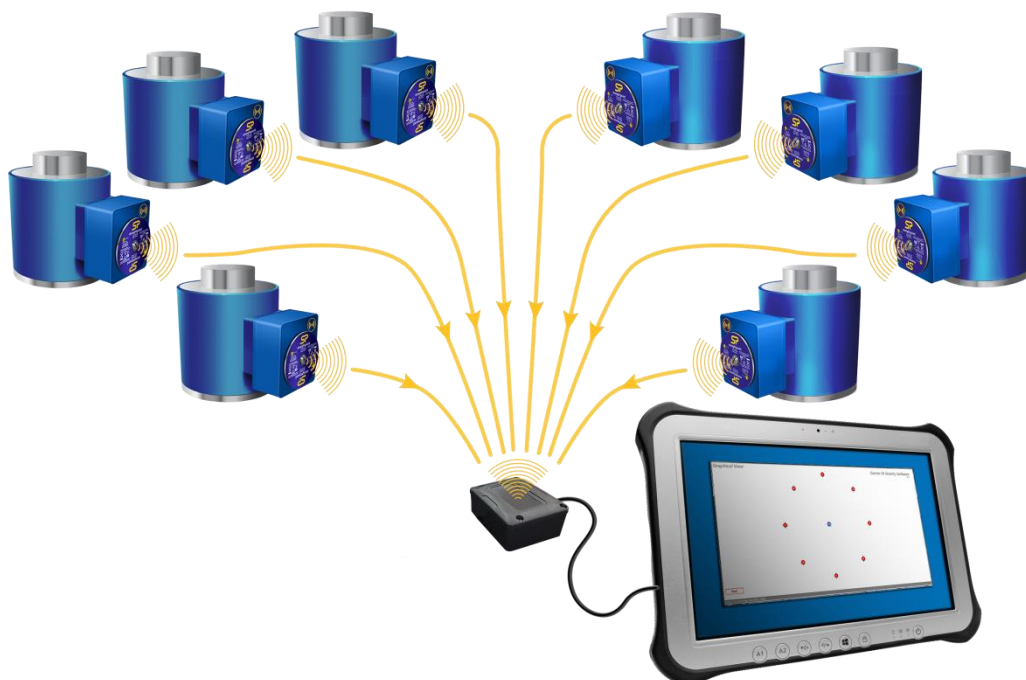
The Straightpoint wireless centre of gravity system uses telemetry compression loadcells that, in conjunction with the WCOGS software, allows the monitoring of individual load points in real-time, and the determination of the dynamic centre of gravity.

The system can weigh and calculate centre of gravity of objects and structures weighing anywhere from 20t - 4000t.

SW-WCOGS Software

Features;

- 100% Wireless;
- Simple and quick installation;
- User friendly interface;
- Between 3-36 loadcells of the same capacity can be used at any one time;
- ISO19901 compliant;
- 500m range;
- On screen, real time centre of gravity view;
- Simultaneous data logging and viewing;
- Three weighing's per report with averages;
- Plot loadcell positioning using measurements or GPS co-ordinates;
- Extra fields for operator, client, wind speed and temperature available for reporting;
- Full mass, load and centre of gravity analysis reporting and printing;
- Full range of accessories for wired, wireless PC and PLC integration via analogue or serial output.

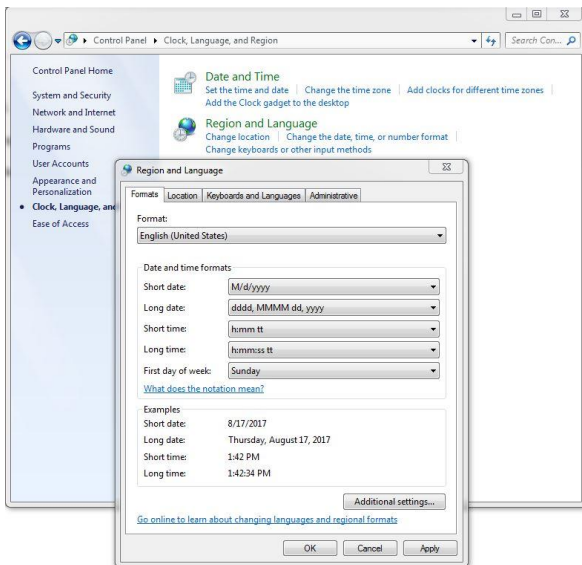


3. Installation & Set Up

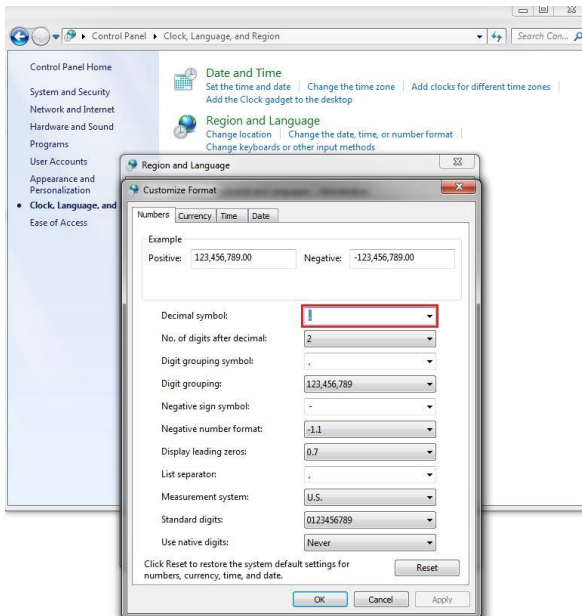
Important Note

The SW-WCOGS software is designed to work on an English Language operating platform. If your PC or device is operating under any other language configuration then a change to the system Regional Settings is required in order for the decimal point to display correctly. To do this:

1. In Windows, go to 'Control Panel' and select 'Clock, Language and Region' (or Region and Language). This will bring up a screen similar to the one below, depending upon your version of Windows.



2. Select 'Additional Settings' to reveal the screen as shown below:



3. Using the drop down box options, change 'Decimal symbol' from ',' to '.'
4. Click on 'OK'

Your SW-WCOGS software will now display decimal points correctly in its readings


Installation

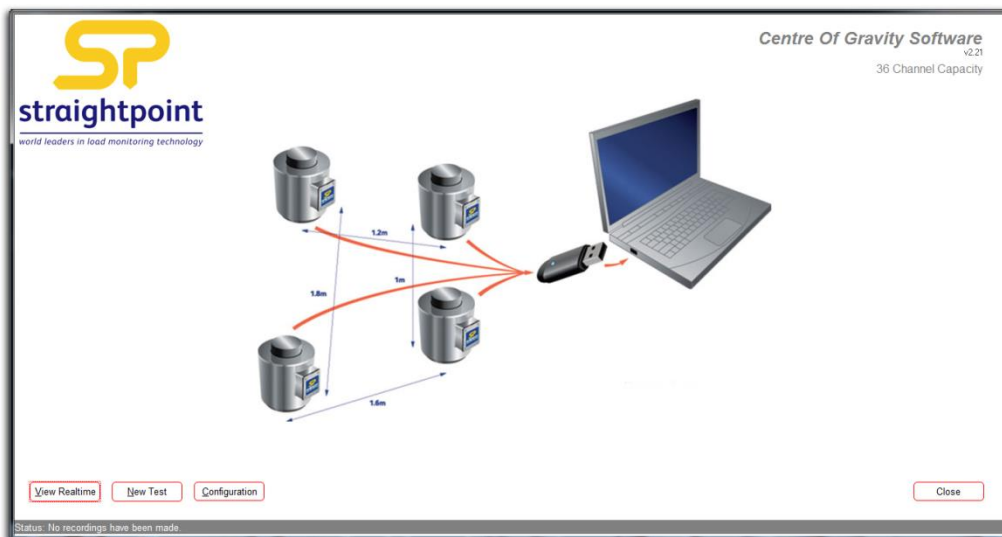
1. Insert the USB key in to a spare USB port on your computer/laptop/tablet/device (do not use a hub) and follow the on-screen instructions to install the software.
2. Remove the USB Key.
3. Insert the SW-USB BSE Transceiver into the USB port, and let the drivers install.



Important

To ensure optimum reception of the signal transmitted from the loadcell(s), see the end of this section 3 for mounting and alignment guidance.

4. Run the software from the desktop or start menu icon  and you will be presented with the screen below.



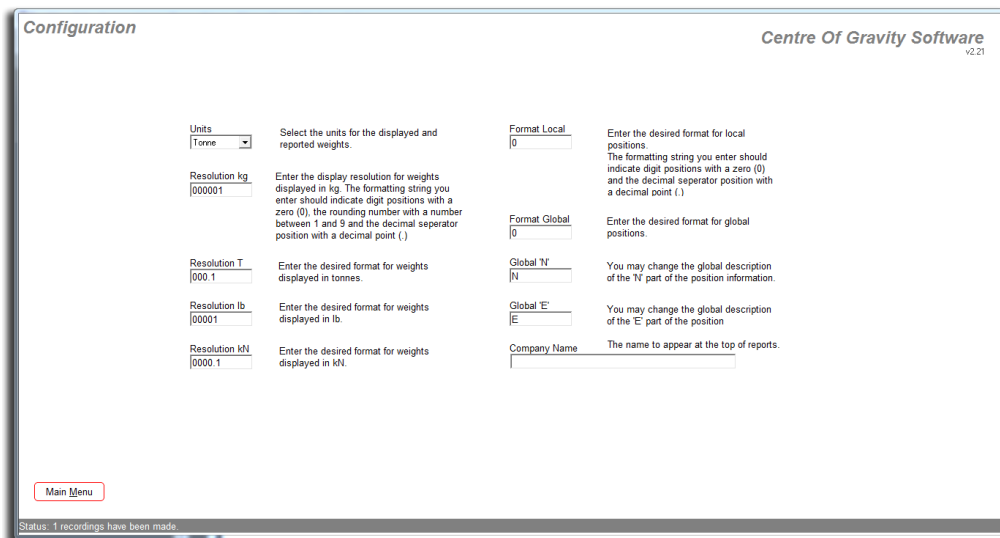
Set Up

To set up load cells for the first time,

1. Click on the 'configuration' button

Configuration

This will reveal the following screen



Configuration Centre Of Gravity Software v2.21

<p>Units [Tonne]</p> <p>Resolution kg [000001]</p> <p>Resolution T [000.1]</p> <p>Resolution lb [00001]</p> <p>Resolution kN [0000.1]</p>	<p>Select the units for the displayed and reported weights.</p> <p>Enter the display resolution for weights displayed in kg. The formatting string you enter should indicate digit positions with a zero (0), the rounding number with a number between 1 and 9 and the decimal separator position with a decimal point (.)</p> <p>Enter the desired format for weights displayed in tonnes.</p> <p>Enter the desired format for weights displayed in lb.</p> <p>Enter the desired format for weights displayed in kN.</p>	<p>Format Local [0]</p> <p>Format Global [0]</p> <p>Global 'N' [N]</p> <p>Global 'E' [E]</p> <p>Company Name []</p>	<p>Enter the desired format for local positions. The formatting string you enter should indicate digit positions with a zero (0) and the decimal separator position with a decimal point (.)</p> <p>Enter the desired format for global positions.</p> <p>You may change the global description of the 'N' part of the position information.</p> <p>You may change the global description of the 'E' part of the position</p> <p>The name to appear at the top of reports.</p>
--	--	---	--

Main Menu

Status: 1 recordings have been made

2. Enter configuration details.

Units – select the units required for weighing from the drop-down list.

Format kg – if using kg units, enter weighing increments e.g. if weighing in 50kg units, enter '50'.

Format T – if using tonne units, enter weighing increments e.g. if weighing in 0.05t increments, enter '0.05'.

Format lbs – if using lb units, enter weighing increments e.g. if weighing in 100lb increments, enter '100'.

Format kN - if using kN units, enter weighing increments e.g. if weighing in 0.5kN increments, enter '0.50'.

Format Local – set this if measuring and recording measurements between the loadcells locally rather than using GPS co-ordinates, e.g. if using a tape measure. And measuring in metres to the nearest 10mm, enter format as '0.01'.

Format Global – set this if measuring and recording measurements between the loadcells using GPS co-ordinates. If GPS co-ordinates are to 4 decimal places, enter format as '0.0001'.

Global N – this would normally be 'North', but change if required.

Global E – this would normally be 'East', but change if required.

Company Name – Enter your company name.

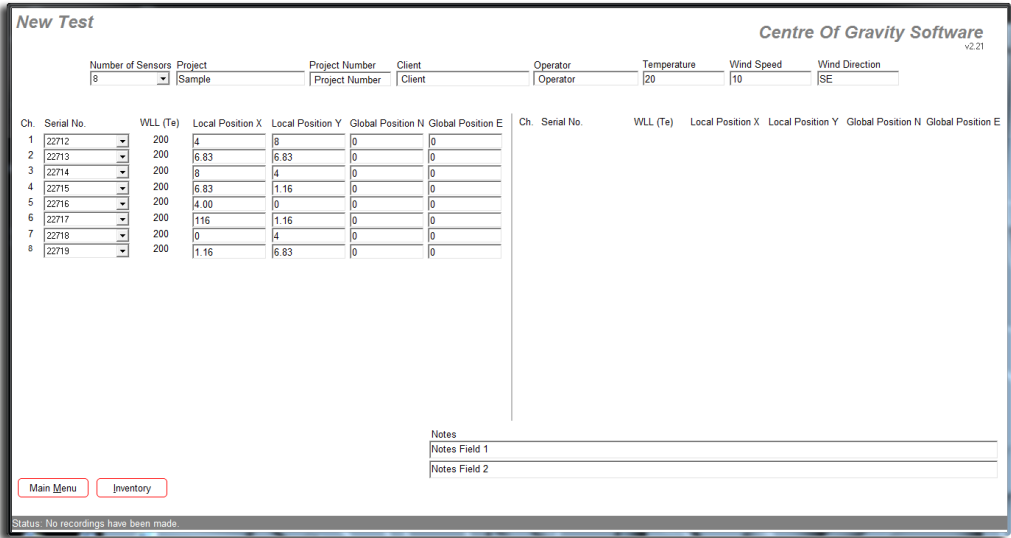
3. When complete click 'Main Menu'.

Main Menu

4. Now set up the loadcells to be used. Click on the 'New Test' button.



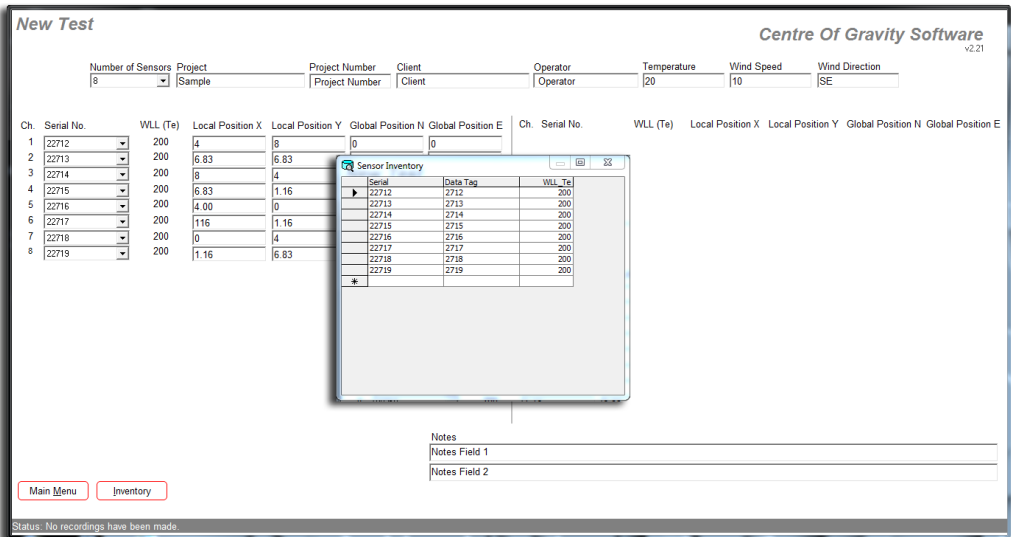
This will reveal the following screen:



5. Add the loadcells to be used. Click on the 'Inventory' button.



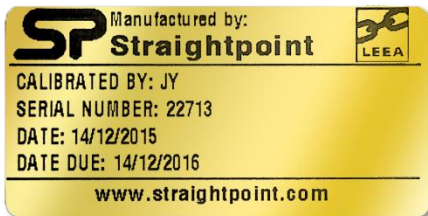
This will reveal the following pop-up screen.



	Serial	Data Tag	WLL	Te
▶	22712	2712		200
	22713	2713		200
	22714	2714		200
	22715	2715		200
	22716	2716		200
	22717	2717		200
	22718	2718		200
	22719	2719		200
*				

6. For each loadcell enter:

Serial Number – this is engraved on the loadcell, and on the calibration sticker.



Data Tag – This is a unique code for the loadcell, and is always the last four digits of the loadcell serial number. This is 2713 in the above image.

Range – Enter the capacity of the loadcell. This can be found on the loadcell, and also on the calibration certificate.

7. Once all of the loadcells have been added, close the screen by clicking 'X' in the top right hand corner. This will return you to the 'New Test'.

8. Click on the 'Main Menu' button to return to the Main Menu. This will allow the system to update the inventory database.



9. The system is now ready to be used and testing can begin. Before proceeding with testing, ensure that the loadcells and transceiver are aligned for optimum performance as detailed in the next section.

Transceiver Alignment

To achieve optimum reception of transmitted microwave signals from the loadcell(s), consideration should be given to the operating environment and alignment of the USBBE receiving module.

The following guidelines and tips will ensure best possible reception and range.

To achieve the best possible signal reception, the USBBE should be mounted with the long side of the module vertical, and the top face pointing towards the loadcell(s). (Fig.1 and Fig. 2)

Try to ensure there is line-of-sight between the loadcell(s) and the USBBE receiver with no obstructions in the path, as these will reduce the range and may possibly degrade performance of radio link due to reflected indirect signals reaching the USBBE receiver. Obstructions can, in the worst case, result in complete loss of the radio link. (Fig. 3)

Wherever practicable, try to avoid having structures or objects in the immediate vicinity of the transmitter and receiver antenna fields as these may distort the field patterns and adversely affect the range and quality of the radio link. Ideally, objects and structures should be at least one metre away from the antennae.



Fig. 1
Vertical mounting of USBBE
for optimum signal reception.



Fig. 2
Antenna receiving field

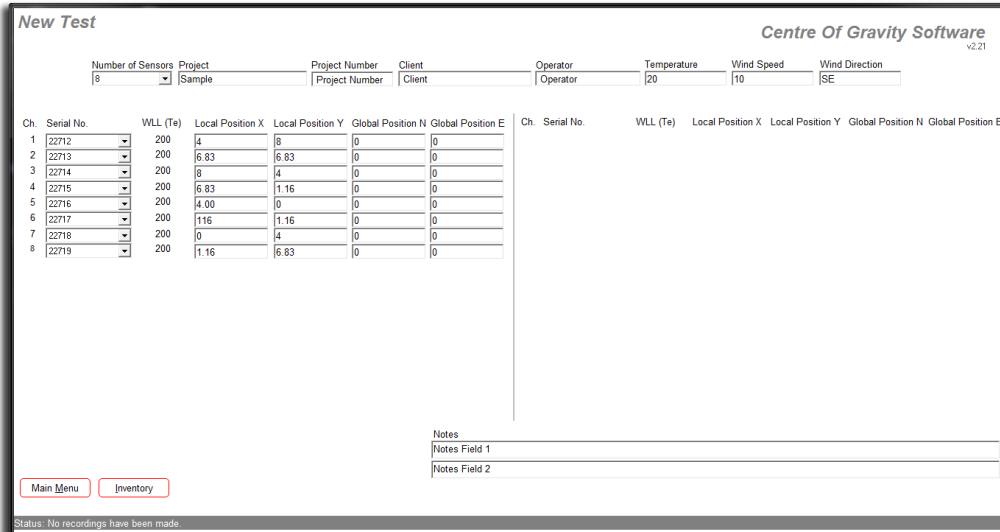


Fig. 3
Establishing an obstacle free line-of-sight path between the USBBE receiver and the loadcell transmitter will provide best quality radio link and greatest range.

4. Using the System

Preparing for Test

- Once all of the loadcells have been added to the inventory (see section Installation & Setup), bring up the 'New Test' screen, either from the Main Menu.



Ch.	Serial No.	WLL (Te)	Local Position X	Local Position Y	Global Position N	Global Position E
1	22712	200	4	8	0	0
2	22713	200	6.83	6.83	0	0
3	22714	200	8	4	0	0
4	22715	200	6.83	1.16	0	0
5	22716	200	4.00	0	0	0
6	22717	200	1.16	1.16	0	0
7	22718	200	0	4	0	0
8	22719	200	1.16	6.83	0	0

- Enter basic test information.

Number or Sensors – enter number of loadcells to be used for the test.

Project – enter project name if and as required.

Project Number – enter project or job number if and as required.

Client – enter client name if and as required.

Operator – enter operator name if and as required.

Temperature – enter ambient temperature of test location if and as required.

Wind Speed – enter wind speed at test site if and as required.

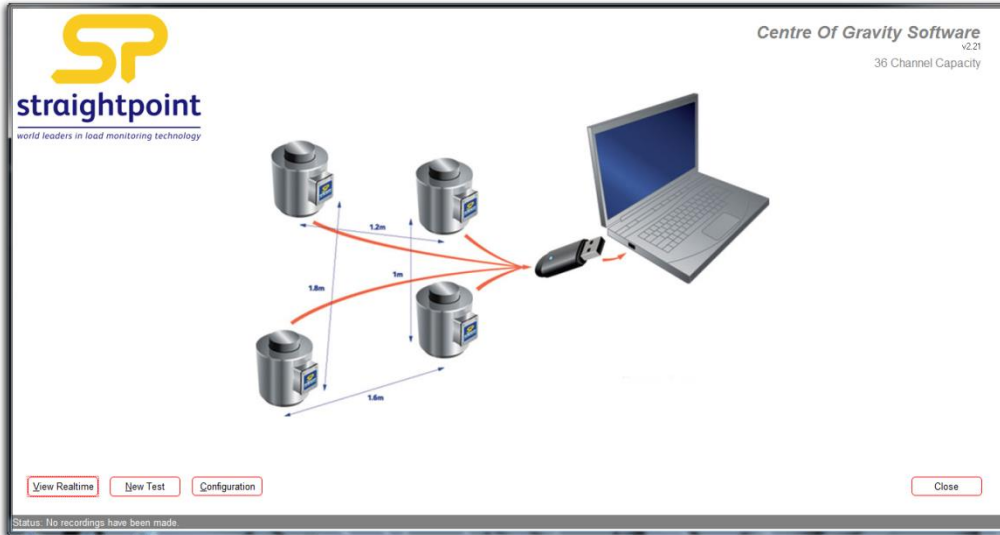
- From the drop-down boxes, choose the loadcells or 'sensor number' to be used for the test. The drop down boxes reveal the loadcells entered into the inventory.
- Enter the x and y co-ordinates for the position of the loadcells in either local or global measurements. In the sample screenshot, eight loadcells are arranged in a circle of eight metres diameter with the first loadcell at x= 4,y=0. See section Graphical View.
- As details of loadcells and positions are added, the number of channels will automatically update to the number being used for the test, up to the maximum of 36.
- Notes fields are provided for any adding any relevant information concerning the test or loadcells. These notes will appear on the printed report.
- Once complete, click 'Main Menu' to proceed with testing.

Main Menu

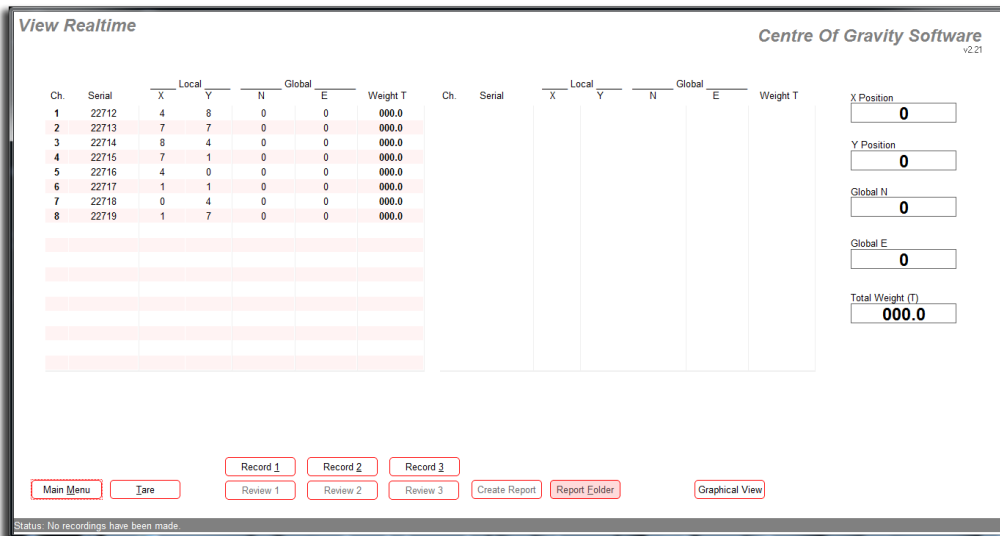
Realtime Weight & Centre of Gravity

1. In the main screen, click the 'View Realtime' button'.

View Realtime



2. This screen will be presented, and show each of the loadcells by serial number, their local or global position, and the load on each load cell in the chosen units.



3. The readings on the right side of the screen will show the centre of gravity co-ordinates, locally and globally. At the bottom, the total weight of the item under test will be displayed.

NOTE: No weights have been entered for the purposes of the sample screen shot.

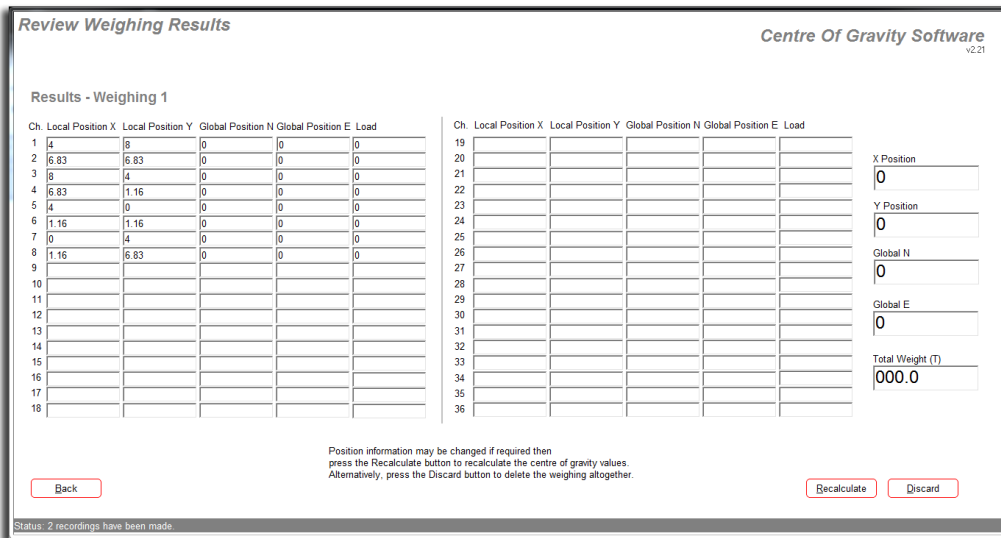
4. Up to three weighings can be recorded by clicking on the 'Record' buttons

Record 1

5. Each record can be reviewed before proceeding with report by clicking on the 'Review' button.

Review 1

6. The Review Weighing Results screen will show the weighing results of each of the recorded weighings as shown below:



7. Click on the 'Back' button to return to the 'View Realtime' screen.

Back

8. If for any reason the review yields unsatisfactory results, the readings can be discarded by clicking on the 'Discard' button. New readings can then be taken by returning to the 'View Realtime' screen.

Discard

9. If any of the position values (X, Y, N, or E) are incorrect or need to be changed, they may be overtyped. Then click on the 'Recalculate' button to refresh the screen with the recalculated centre of gravity.

Recalculate

10. Click on the 'Back' button to return to the 'View Realtime' screen.

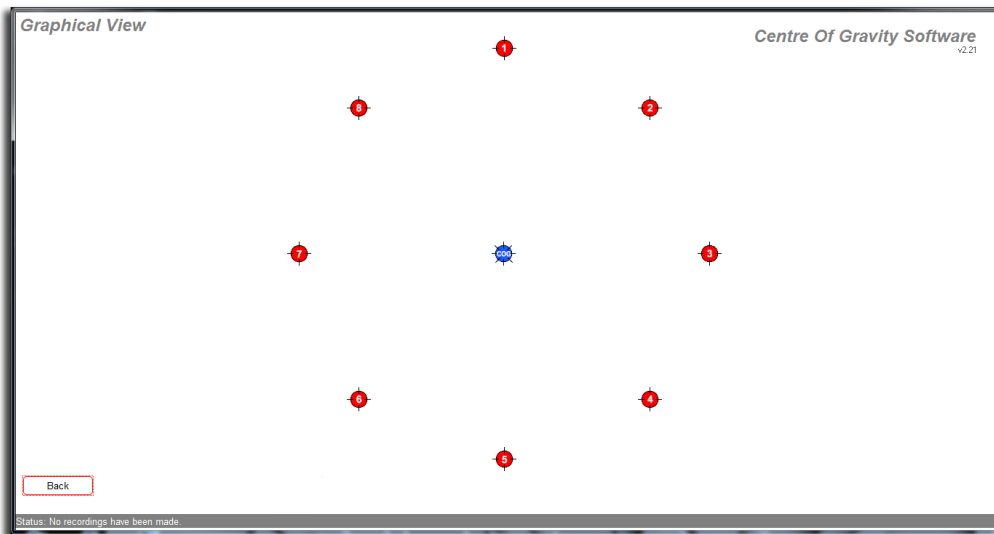
Back

Graphical View

1. Once the load has stabilized on the loadcells, the live centre of gravity can be viewed graphically. This is a useful visual realtime check of the centre of gravity in relation to the loadcells
2. To do this, click on the 'Graphical View' button.

[Graphical View](#)

This will reveal the screen shown below, and will show all of the loadcells being employed, and the position of the centre of gravity (shows the eight loadcells used in the example)



3. To revert to viewing realtime data, click the 'Back' button.

[Back](#)

This will return you to the View Realtime screen.

Weighing Report

- Once three satisfactory weighings have been taken and recorded, a weighing Report can be generated from the View Realtime Screen by clicking on the 'Create Report' button.


Create Report



Important

A minimum of three readings need to be taken to generate the report. The status bar at the bottom of the screen will inform you how many recordings have been made. A Report cannot be generated until the three readings have been recorded

The report will appear in a separate window.



straightpoint
world leaders in load monitoring technology

Date: 18 October 2016
 Operator: Operator
 Project: Sample
 Project Number: Project Number
 Client: Client

WEIGHING RESULTS

Sample

Environmental Conditions			
Temperature	Wind Speed	Wind Direction	
20	10	SE	

Global Coordinates			Local Coordinates			Load Cell Input (T)				
Cell Position	N	E	Cell Position	X	Y	Cell Position	Weighing 1	Weighing 2	Weighing 3	Mean
1	0	0	1	4	8	1	000.0	000.0	000.0	000.0
2	0	0	2	7	7	2	000.0	000.0	000.0	000.0
3	0	0	3	8	4	3	000.0	000.0	000.0	000.0
4	0	0	4	7	1	4	000.0	000.0	000.0	000.0
5	0	0	5	4	0	5	000.0	000.0	000.0	000.0
6	0	0	6	1	1	6	000.0	000.0	000.0	000.0
7	0	0	7	0	4	7	000.0	000.0	000.0	000.0
8	0	0	8	1	7	8	000.0	000.0	000.0	000.0
TOTALS							000.0	000.0	000.0	000.0

Global COG Result				
	Weighing 1	Weighing 2	Weighing 3	Mean
COG N	0	0	0	0
COG E	0	0	0	0

Local COG Result				
	Weighing 1	Weighing 2	Weighing 3	Mean
COG X	0	0	0	0
COG Y	0	0	0	0

MEAN TOTAL WEIGHT (T):	000.0	Global	0	Local	0
Standard Deviation Weight:	0.00	Mean Centre of Gravity COG X and N	0		
Standard Deviation in Percent:	*SDWP*	Mean Centre of Gravity COG Y and E	0		
		Standard Deviation COG N	0.00		
		Standard Deviation COG E	0.00		

Notes:
 Notes Field 1
 Notes Field 2

	Name	Signature	Date
Representative			
Client Representative			
Customer Representative			

2. All Reports are automatically saved and can be accessed by clicking on the 'Report Folder' button.

A rectangular button with a red border and a white background, containing the text "Report Folder".

3. All reports generated will be listed in the window.
4. Open the last, or required report to view and print if required.

Test Completion

1. To finish the test, click on the 'Main Menu' button.

A rectangular button with a red border and a white background, containing the text "Main Menu".

2. Close the program by clicking on the 'Close' button.

A rectangular button with a red border and a white background, containing the text "Close".