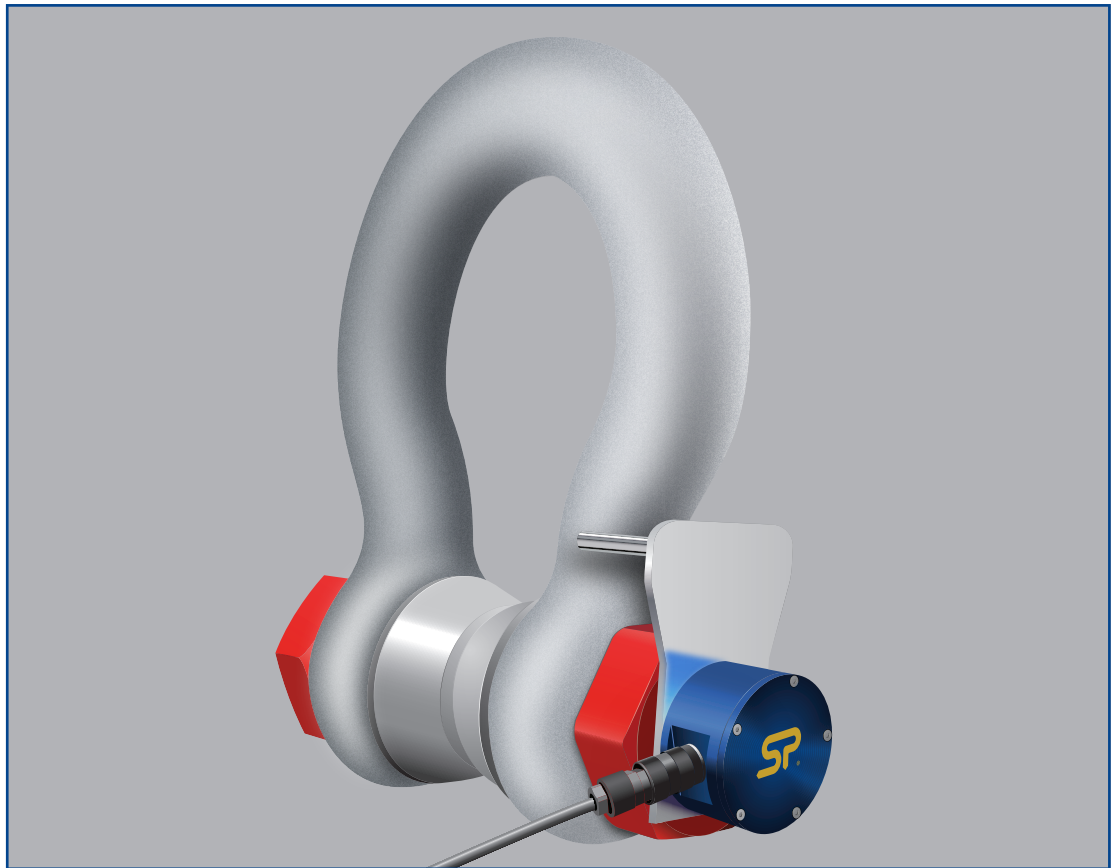




# loadshackle



Available from stock in capacities 3.25t to 120t, and available up to 1,550t, the Loadshackle is manufactured from Crosby's industry leading 2130 Carbon and 2140 Alloy Bolt Type Anchor Shackles (3.25t - 120te) and the GN H10 Alloy Bolt Type Anchor Shackle (120te on up). The Loadshackle offers reduced overall weight and headroom providing a great fit for low headroom applications.

Utilising the same advanced microprocessor based electronics as all Straightpoint products, our cabled Loadshackle benefits from high sampling rates, extreme resistance to industrial level noise and unprecedented stability. Our huge range of tooling allows us to calibrate in shackle for extra accuracy unlike many other load cell manufacturers. This high stability provides the product with over 5,000 divisions and the highest standard resolution of any high capacity Loadshackle on the market today. Straightpoint cabled loadshackles are also environmentally sealed to IP67 and as an option, sealed for permanent submersion for sub-sea use.

Whether used in heavy lifting, mooring anchor placement or sub-sea applications, Straightpoint's cabled loadshackle offers robust construction, advanced electronics, industry leading resolution and accuracy all at a cost-effective, affordable price.

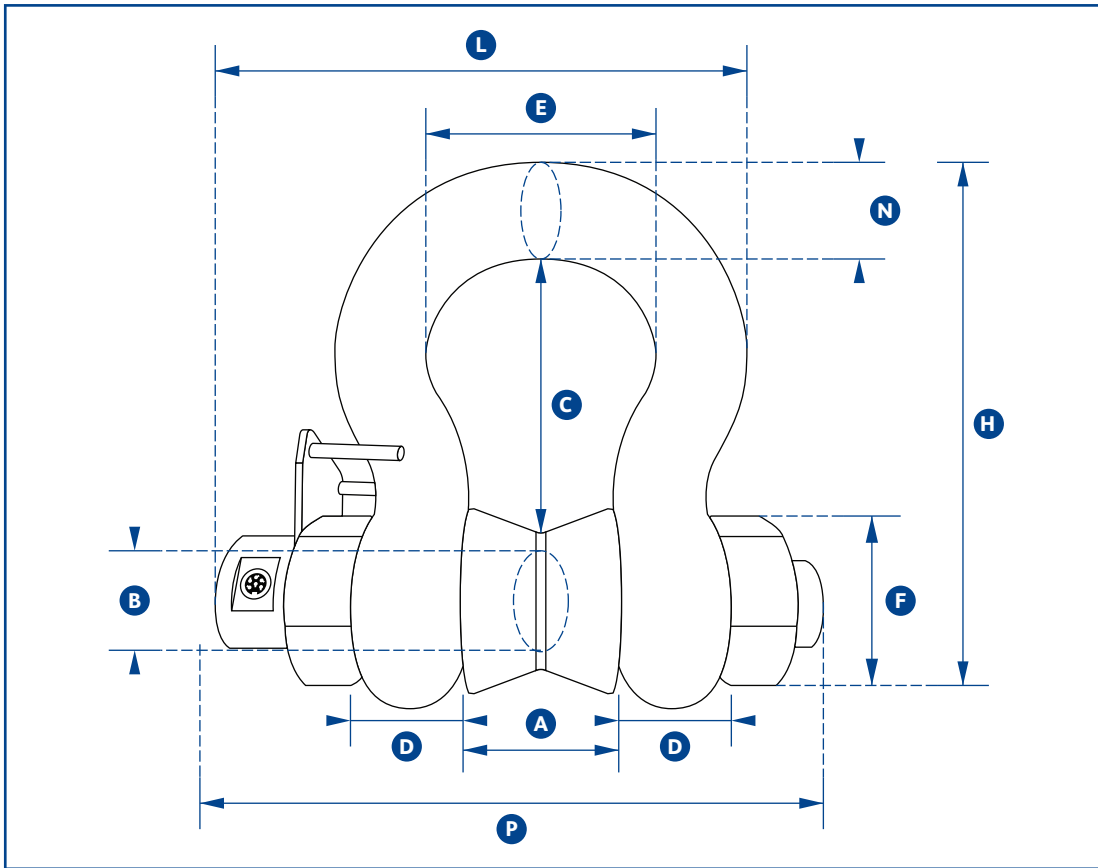


Requires connection to our Handheld Plus (SU3343), our desktop controller data logging software package (DCP10M) or our External Amplifier (SA-3420), or other instrumentation.

## Features and benefits:

- Robust construction
- Compact size and low headroom
- High accuracy
- Every unit proof tested
- Lightweight
- Audible overload alarm
- Unrivalled resolution
- Tare
- Environmentally sealed
- Peak hold
- Advanced options available

## metric specifications



# loadshackle

Part Number	SLB1T	SLB3.25T	SLB6.5T	SLB12T	SLB25T	SLB55T	SLB85T	SLB120T	SLB200T	SLB300T	SLB400T
Capacity	1te	3.25te	6.5te	12te	25te	55te	85te	120te	200te	300te	400te
Resolution	0.001te	0.005te	0.005te	0.01te	0.02te	0.05te	0.05te	0.1te	0.2te	0.5te	0.5te
Weight	2kg	2.8kg	3.2kg	8kg	18kg	25kg	45kg	85kg	215kg	364kg	520kg
Safety Factor	300% of rated load										
Operating Temp	-10°C to +50°C										
Accuracy	±1%										
Protection	IP67 std or submersion to 30m as an option										
Dimension A	16.8	26.9	36.6	51.5	73	82.5	105	127	184	213	210
Dimension B	11.2	19.1	25.4	35.1	51	57	70	82.5	121	152	178
Dimension C	36.6	60.5	84	119	178	197	267	330	397	495	572
Dimension D	9.65	16	22.4	31.8	44.5	51	66.5	76	95.5	121	165
Dimension E	26.2	42.9	58	82.5	127	164	184	200	279	330	330
Dimension F	23.1	38.1	53	76	106	122	145	165	267	305	356
Dimension H	63	106	148	210	313	348	453	546	743	895	1022
Dimension L	87.2	116	142	180	265	290	352	392	562	664	689
Dimension N	9.65	17.5	24.6	35.1	57	61	79	92	152	172	184
Dimension P	68	103	133	178	243	277	357	432	534	631	723