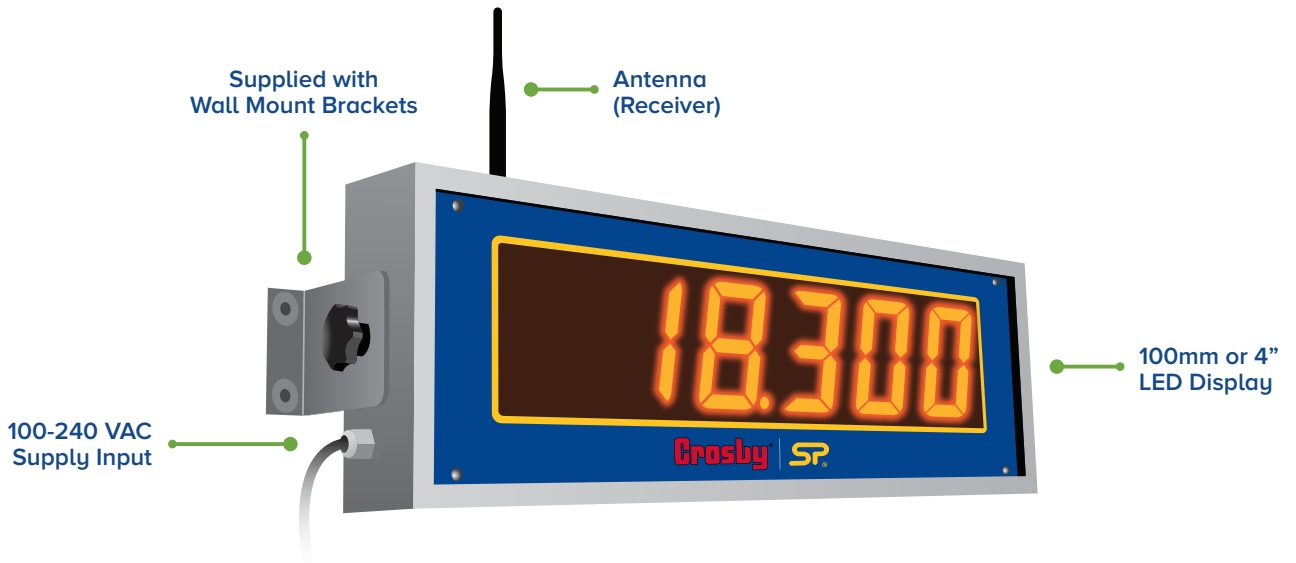


Wireless scoreboard display



This 100mm (4") scoreboard LED display is wireless, and has a range of 700m or 2300ft, and is viewable for up to 45m or 150ft.

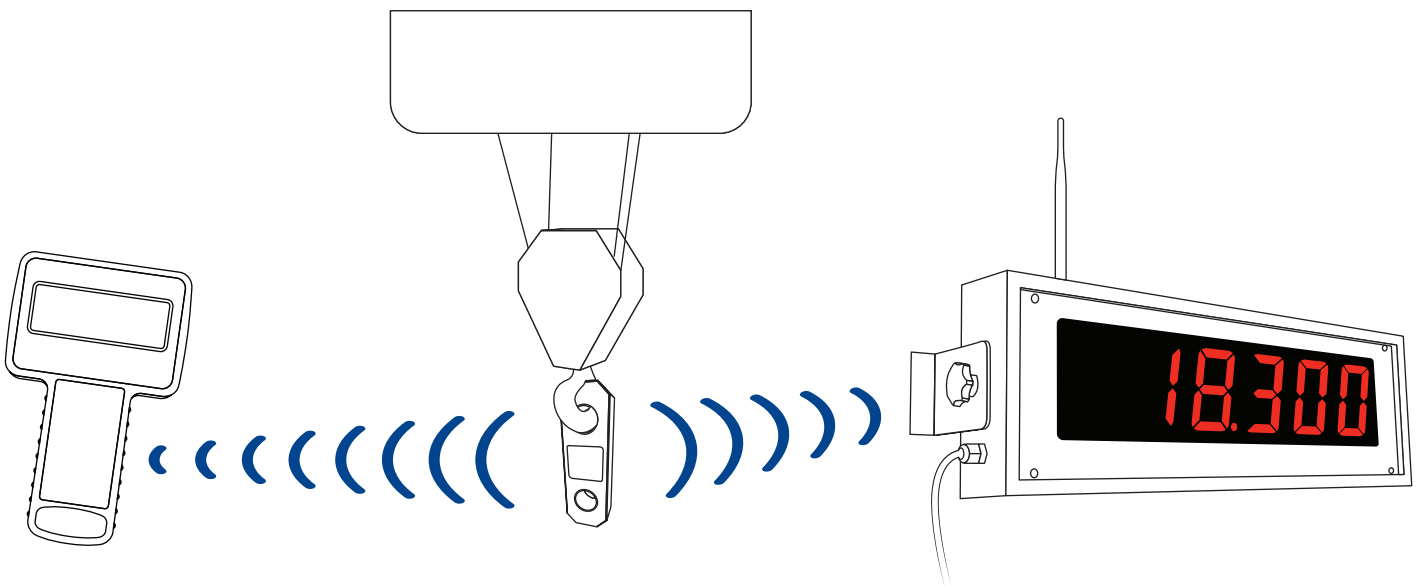
Perfect for installation on a crane gantry, the unit operates on 100-240 VAC and displays an individual load or summed load for up to four Crosby | Straightpoint wireless devices. It will also visually alert the lift operator if an overload has occurred.

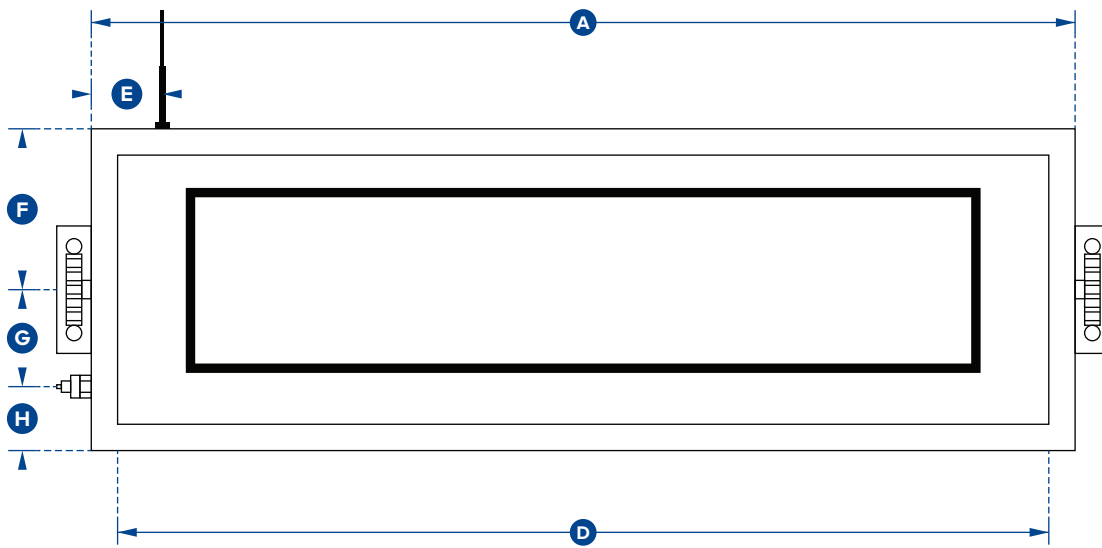
Please note: the units of the scoreboard are set to be displayed in tonnes as default. If you require it to display in different units (lbs/kg) please specify this when ordering through our sales team, so we can set the scoreboard to display your desired unit.

Features and benefits:

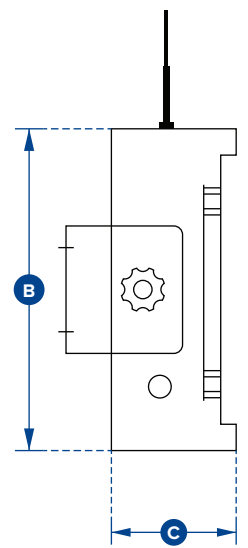
- Easy to read 100mm or 4" LED display
- Rugged steel case
- Wall mount brackets supplied
- External antennae for maximum range
- Wide range for power supply input
- Reads and displays in Tonnes

Solution





Front Elevation



Side View

Part Numbers	
SP	SW-SD
Crosby	2789132
Required power supply	100 - 240 VAC
Operational current	0.7A
Radio frequency	2.4 GHz (license free)
Maximum number of load cells	4 wireless load cells (sum display)
Range	700m
	2300ft
Operating temperature range	-10°C to +50°C
	+14°F to +122°F
IP rating	IP55
	NEMA 4 and 4X
Dimension A	700mm
	27.5"
Dimension B	230mm
	9"
Dimension C	90mm
	3.5"
Dimension D	660mm
	26"
Dimension E	50mm
	2"
Dimension F	115mm
	4.5"
Dimension G	70mm
	2.75"
Dimension H	45mm
	1.75"